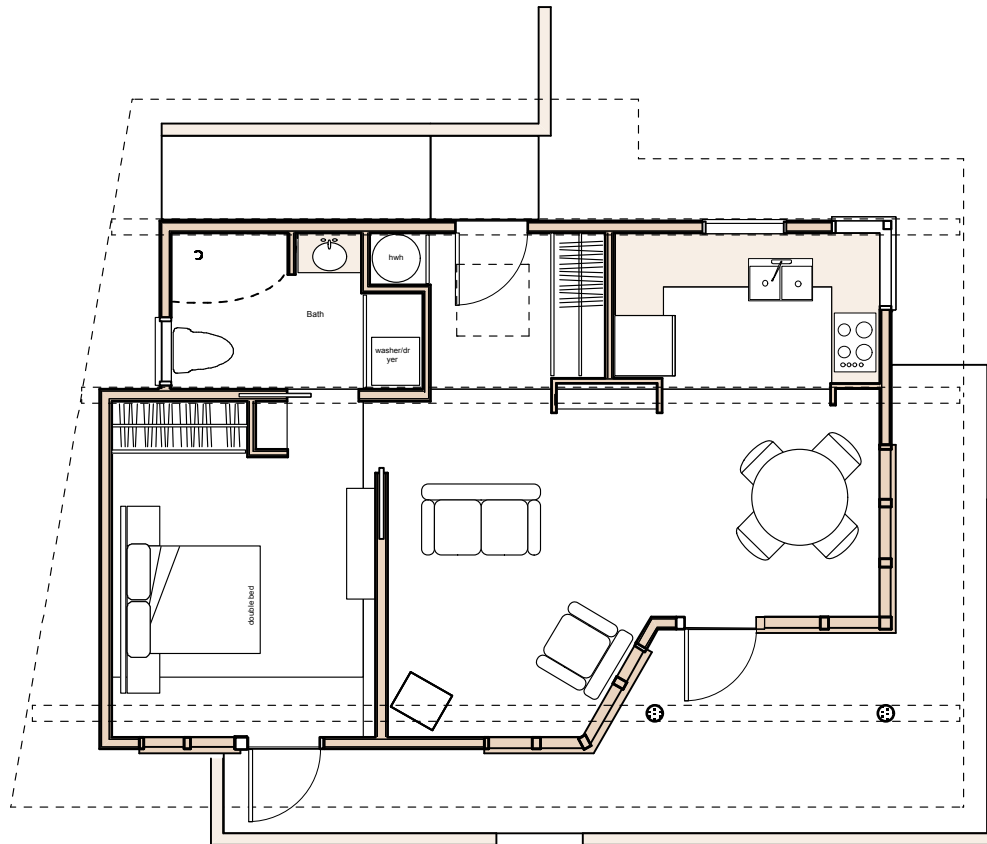
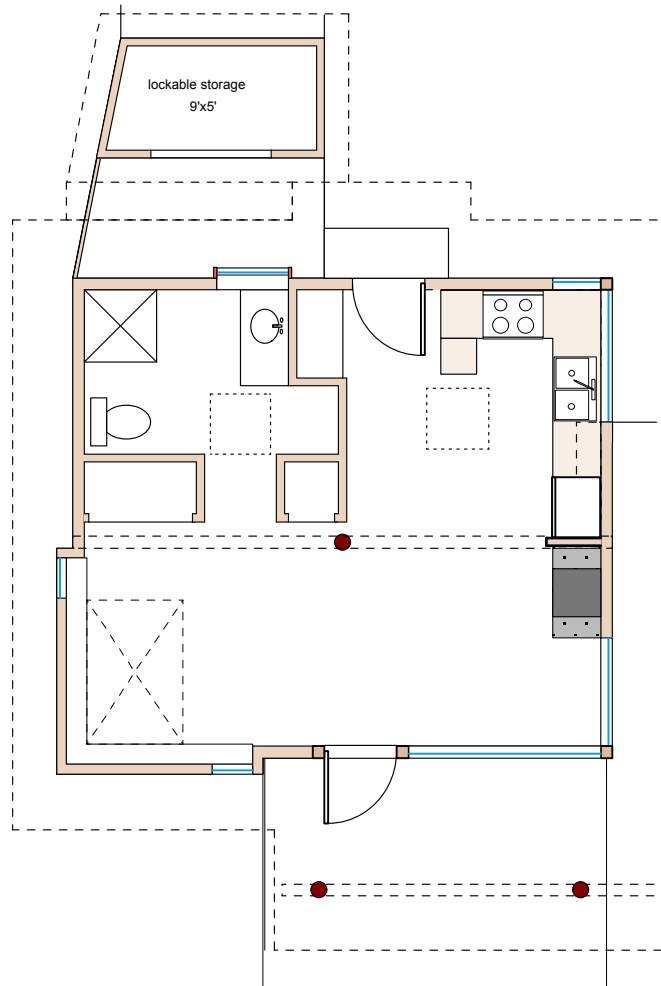


Unit 2
675 s.f.
 minimal patio
 556 sf basic unit
 heated concrete slab
 1997

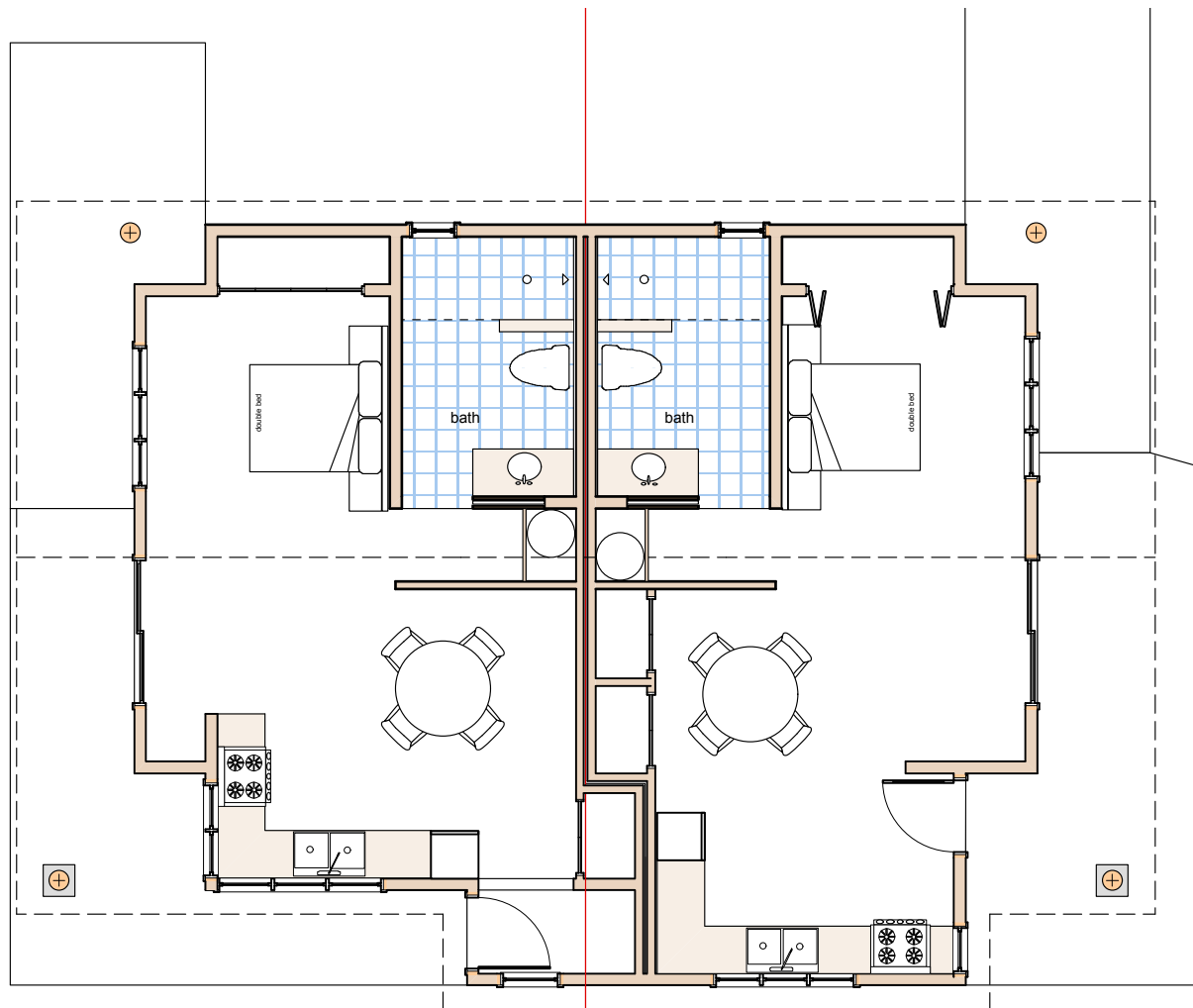
Unit 1
658 s.f.
 minimal patio
 556 sf basic unit
 heated concrete slab
 1997



Unit 3
650 s.f.
250 sf deck
perimeter foundation
with crawlspace
1996

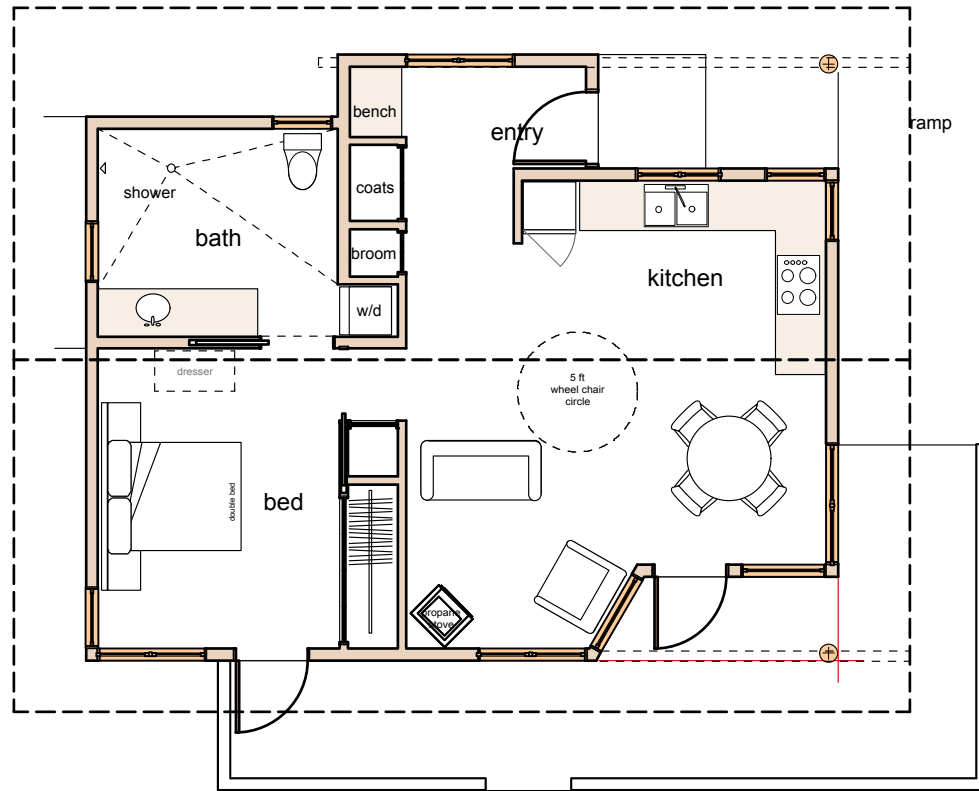


Unit 4
461 s.f.
150 sf patio
95 sf storage
concrete slab floor
1999

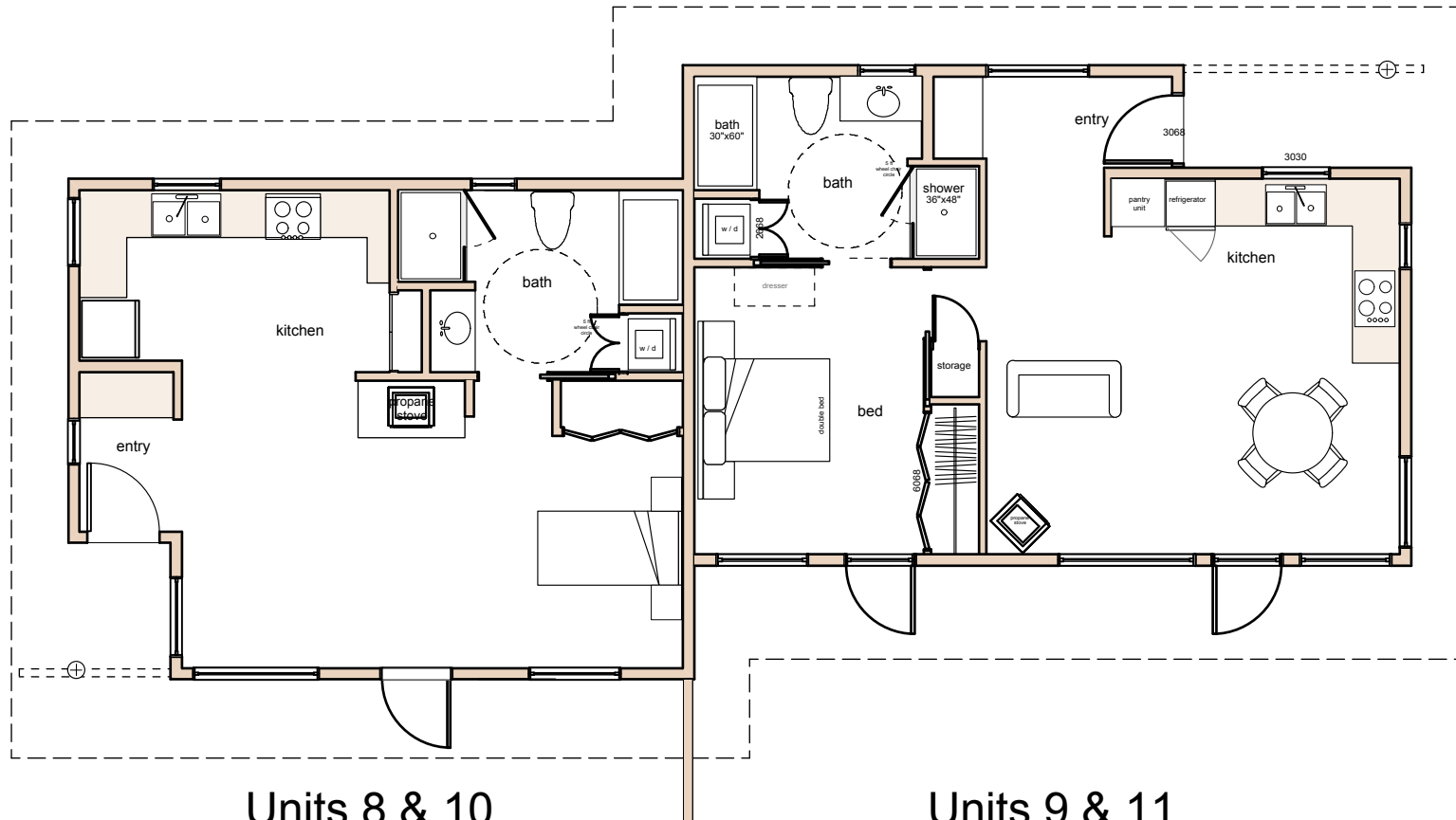


Unit 6
 561 s.f.
 450 sf deck
 perimeter foundation
 with crawlspace
 2003

Unit 5
 562 s.f.
 450 sf deck
 perimeter foundation
 with crawlspace
 2003



Unit 7
 685 s.f.
 280 sf deck
 perimeter foundation
 with crawlspace
 2005



Units 8 & 10

578 sf

perimeter foundation
with crawlspace
2007

Units 9 & 11

660 sf

perimeter foundation
with crawlspace
2007